

Example Namibia: Big Sky Country - Ocean, Desert and Wildlife Safari



12 days round trip – self-drive. This tour covers most of the best that Namibia can offer – the red desert, the Atlantic coast, strange Damaraland, Etosha National park and a private game reserve. The example is priced for 2017 for 2 persons, African winter/Northern hemisphere summer/early fall.

Day 1 To Windhoek: You arrive at Windhoek airport where you are met by your transfer guide who will take you to your guesthouse in Windhoek. 1 night with breakfast.

Day 2 Sossusvlei and the red desert: After an early breakfast your rental will be delivered and off you go in a southerly direction to Sossusvlei and the Namib Desert. You will arrive at your lodge in the afternoon. 2 nights with all meals and 1 activity per day included. There might be time for an activity on arrival, a nature drive in the desert or a guided walk. Please note that hot air ballooning is not included and should be pre-booked.



Day 3 The Namib – the red desert: You will leave very early in the morning to go deeper into the desert – to one of the highest sand dunes which you will climb. From the top you can slide-run down landing at the Dead Vlei. Picnic lunch is served in the shadow of a tree before returning to the lodge. And if you did not have time for an activity yesterday afternoon, you can do that today.



Day 4: From desert to the Atlantic and Swakopmund: You will be driving north and westwards to the coastal towns of Swakopmund and Walvis Bay. Overnight 2 nights at a guesthouse right on the ocean in Swakopmund, breakfasts are included.

Day 5: Swakopmund and the coast. This day is at your disposal, some of the activities on offer are quad biking and sand boarding in the Namib Desert where it meets the Atlantic, fishing, boat trip from Walvis Bay to bird- and seal colony and paragliding. No activities have been included.



Day 6: From Swakopmund to Damaraland. After breakfast and check out you will be driving northwards along the Atlantic for a while before turning inland and eastwards towards Damaraland. You will stay 2 nights at a lodge in Damaraland. All meals and two activities are included: a guided tour to Twyfelfontein and the amazing rock formations and Rock Art in the area, and a morning or afternoon drive looking for desert elephants. The area is too dry and barren to hold large herds of animals but there are some that have adapted and you might encounter desert elephants, springbok and gemsbok.



Day 7: Damaraland

The day is at your disposal for activities and relaxation.



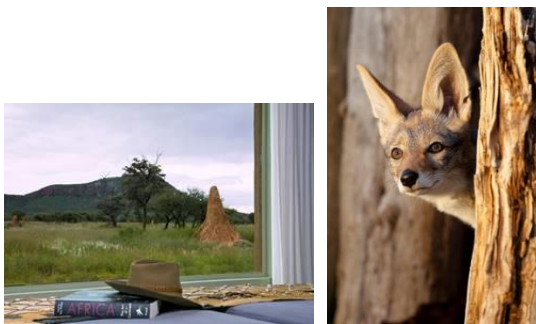
Day 8: From Damaraland to Etosha National Park

You will leave the lodge early and head east, through fascinating landscape and rock formations towards Etosha. The Owambo people call the Etosha area Place of Dry Water. And rightly so, it does not rain much. Subsequently there are always animals at the waterholes in Etosha National Park. Stay 2 nights at a safari lodge located just outside the National Park. All meals and a full day of guided game driving in Etosha National Park is included.

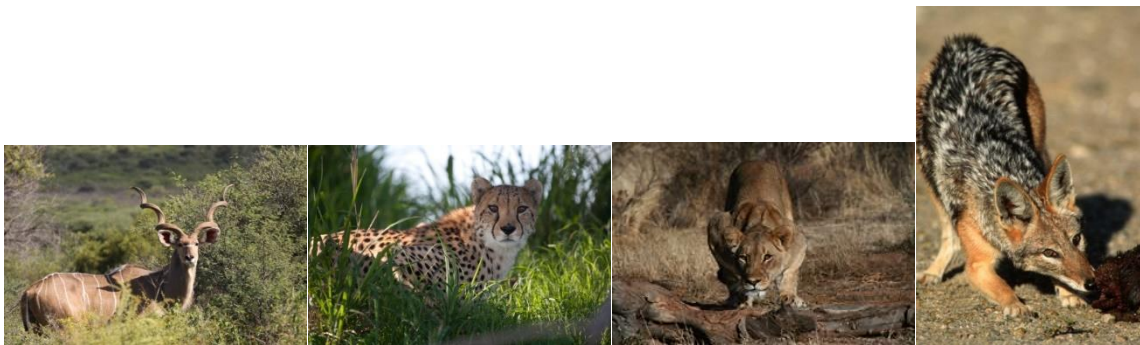


Day 9: Safari in Etosha National Park. The day is spent in a guided safari vehicle, game driving in the park all day. Picnic lunch is provided. Return to the lodge for dinner.

Day 10: From Etosha to safari in the bush. After breakfast and check out you drive south towards Windhoek and less dry areas. You are going to a private game reserve and will stay 2 nights in a safari lodge. All meals are included and 2 x game drives or game walks are included. Time permitting you can do a game drive that afternoon, or two game drives the next day.



Day 11: Wild life safari. The day is at your disposal for game driving or other activities on offer. Additional activities can be booked at the lodge and paid direct.



Day 12: Departure from Windhoek airport. After early breakfast and check out you drive to Windhoek and the airport. You drop off the rented vehicle and check in for your onward flight.

Prices 2017, African winter/Northern hemisphere summer, early fall.

This is a price estimate based on 2 persons sharing. Standard rom, 3 to 4 star hotel/guesthouses, lodges.

Estimated price: about ZAR 54.000 per person sharing.

Included:

3 nights with breakfast only, 8 nights with breakfast, lunch and dinner. Game drives and other activities as mentioned as included in the program.

Road transfer from Windhoek airport to guesthouse in Windhoek.

Vehicle rental, unlimited kilometre, insurance and delivery fee.

Not included: Flights, Visa expenses, drinks, meals not mentioned as included, sightseeing, excursions and activities not mentioned as included, park fees and conservation fees, contract fee for the vehicle, gratuities, personal insurance and other expenses of a personal nature.

Safari Shop - African Wildlife Adventures (trading)
travel@safarishop.cc